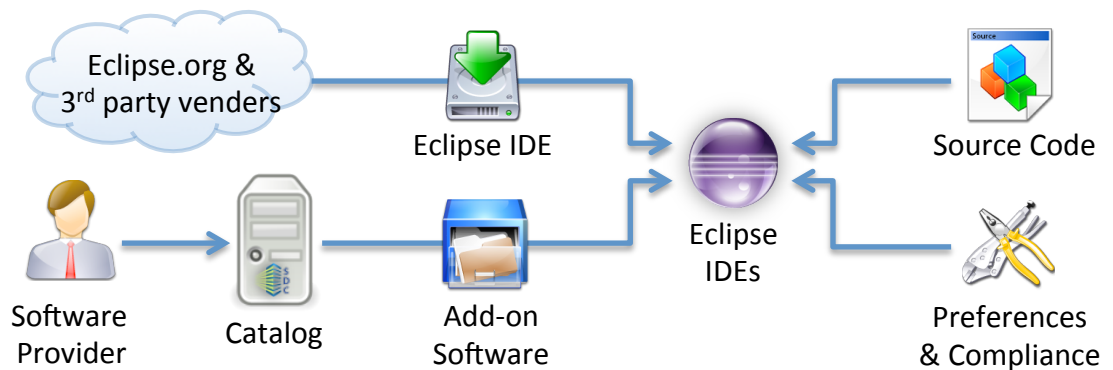


Eclipse Delivery is Wicked Hard

A Look at Traditional Eclipse Delivery Hacks & the Simplicity of SDC



Genuitec
The Cloud Control Company

Author's Page



Iris Meneley is an inbound marketing content creator at Genuitec, focused on blogging and public relations. Before Genuitec, Iris worked in operations management in the retail industry.

Follow her on Twitter [@hopefuliris](https://twitter.com/hopefuliris) or learn more about her at <http://about.me/irismeneley/>

Jed Anderson is the Development Manager at Genuitec, focused the production and development of our software management, security and delivery tools such as Secure Delivery Center and SDC Cloud Connect.

Follow him on Twitter [@Jedatwork](https://twitter.com/Jedatwork) or learn more about him at <http://about.me/JedKCAnderson>



Table of Contents

Introduction	4
Getting Started	5
Pain Points of Eclipse Delivery	6
Domain Knowledge	7
Plug-ins & Updates	8-9
Security	10
Tool Stack Maintenance	11
Workspace Setup	12
Multiple Packages	13
SMS Distribution	14
Closing Remarks	15

Introduction

With the many options in the Eclipse delivery space, both in open source and commercially, the complexities of distribution are often greater than expected.

In this eBook, we've compiled over 20 man-years of experience and knowledge from the Genuitec software delivery team. Their goal has been to simplify the delivery of Eclipse.

Using that information, we'll provide you with a thorough look into the pain points of using free delivery solutions for Eclipse, traditional hacks utilized to maneuver through the murky morass of vanilla Eclipse Delivery, as well as provide a look at Genuitec's Secure Delivery Center, which simplifies the Eclipse delivery problem for administrators and end-users alike.

Getting Started

Eclipse delivery, begins with Eclipse packaging.



5 Steps to Hack Eclipse Delivery

1

Download Eclipse package from Eclipse.org



2

Add plug-ins



3

Set `-clean` parameters in the `config.ini` file



4

Zip up directory

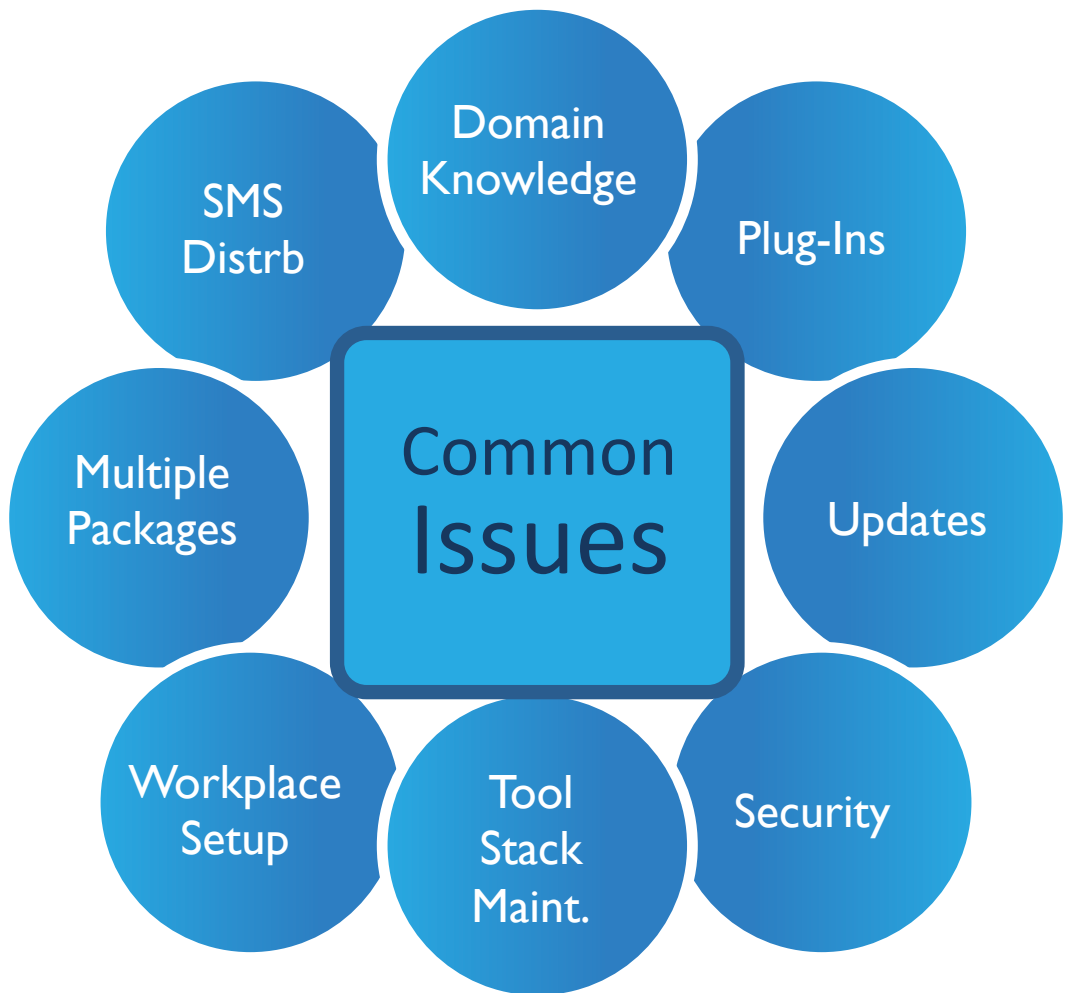


5

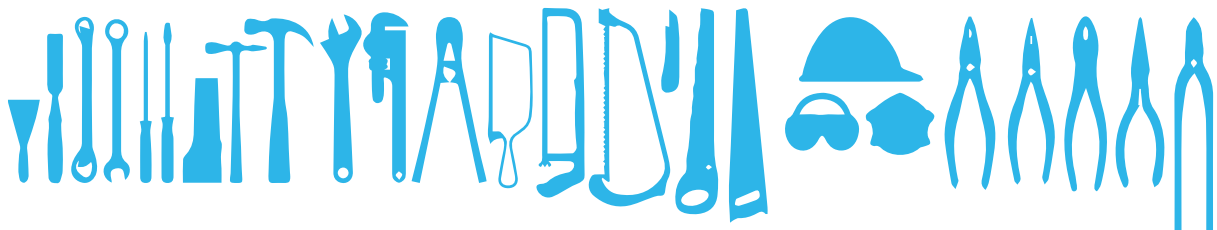
Deliver to your team



Pain Points of Eclipse Delivery



Basic Eclipse Delivery ignores the lifecycle of your tool stack

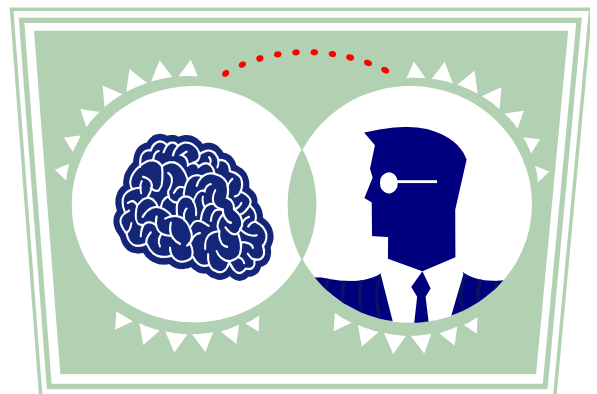


Domain Knowledge

Problem #1: Eclipse Delivery requires a vast amount of domain knowledge

You practically have to be an Eclipse guru to set up and maintain Eclipse packages.

The EPP tools allow you to build your own packages, but you need a lot of domain knowledge around Eclipse packages, p2, and the EPP tooling.



SOLUTIONS



To learn the ins and outs of building Eclipse packages, check out...

http://wiki.eclipse.org/EPP/How_to_build_a_package_locally



In the SDC Admin Console, just select the Eclipse package you usually download and add the software your team needs.

Plug-ins: Locating Exact Plugin Version

Problem #2: Finding the right version of plugins requires constant hunting

Concerns:

- Do you have the exact binary?
- What if your update site goes down?
- Is your update still supported?



SOLUTIONS



Learn the p2 tools, manage a web server & make local copies of update sites to mitigate your exposure to update site fragility.



Choose from our library of readily available plug-ins for your team, which update quarterly, or import update sites simply using a wizard.

Plug-ins: Unmanaged Cycle Updates

Problem #3: Continuous plug-in updating from Eclipse creates hassle

Large production teams often suffer with the hassle of continuous plug-in updating from Eclipse

Switching Eclipse versions requires rebuilding your tool stack. There's no alternative when you're shipping a zip.



SOLUTIONS



Set up local mirrors of update sites. Maintain multiple zips if you have the manpower.



SDC allows for simple switching between version and stores archives of exact tools behind-the-firewall to ensure your users receive what you have vetted.

Security

Considerations:

- Do you need to prevent your team from installing some software?
- Will you require signed tools?
- Are you locked behind a firewall?

YES

You'll need to write plugins to limit the Features of your package

You have to sign plugins yourself

SOLUTIONS

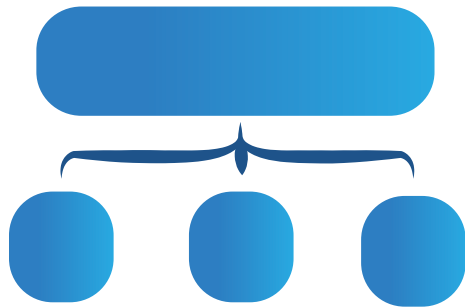


Use Eclipse build technology to sign your bundles, hand sign bundles from others. Maintain your own security plugins.



With one-click, SDC can disallow changes to tool stacks, or limit to only certain updates sites on a per-package basis as well as allow instant signing.

Tool Stack Maintenance



Rebuilding and testing your tool stack to react to developer needs can be close to impossible.

Support for different versions of Eclipse and different plugin versions comes and goes dynamically in the Eclipse ecosystem.



SOLUTIONS



Focus on only changing key elements as users can be negatively impacted by updates. Only making high impact changes reduces support load.



SDC's centralized design allows you to create multiple sanctioned tool stacks simultaneously & roll back to prior versions easily.

Workspace Setup

Deploying an Eclipse package to your team is just the first step.

Instead of following the install up with documentation, go the extra mile and set up their workspace automatically. A tools-over-documentation approach reduces human error and speeds up on-ramping.

Finally, you'll know exactly the state of your developers' tools and workbench, reducing your support load.



SOLUTIONS



Create and share a zip with a corresponding Wiki page listing out your workspace setup instructions.



Automates preferences, team project set imports, target platforms and projects for GIT, CVS & Subversion +anything else you can imagine

Multiple Packages

Your Development teams are not stagnant. They grow, split, and grow and split some more, creating a vast tree of tooling needs.

Supporting multiple packages means you need a team to develop and test the different permutations.

Are you using custom plugins on top of Eclipse?

Yep, those will have to be shipped and managed too!

Good News – Even the smartest developers find this task difficult because of the size of the testing matrix.

SOLUTIONS



Create a new Zip for each package to be shipped. Staff enough people to test the full matrix of packages you need to support.



SDC allows you to create, manage & distribute multiple packages simultaneously. Certified software packs reduce your testing headaches.

SMS Distribution

Eclipse's update technology was designed to satisfy developer needs, not play friendly with SMS.

Although you can use SMS to deliver the first install of Eclipse, it becomes messy when you try to handle plug-in updates and workspace configuration.



Caution: Using SMS for initial rollout only opens the door for developers to lag behind your supported versions of plug-ins.

SOLUTIONS



SMS can push out a zip file with no problem, but pushing out updates gets messy.



SDC has admin-only pages to get installers for packages which are ready for SMS distribution and allows for package updates in a locked down environment.

Closing Remarks

Eclipse delivery is wicked hard. While there are workable approaches for delivering the tools and plugins your development team needs, they require significant engineering effort.

SDC distills the delivery process down to the most important features for your enterprise and simplifies the administration of that delivery, allowing you to focus on your developers needs while saving you time and money.

Genuitec's Secure Delivery Center (SDC) is a trusted alternative to hand-grown software delivery and management. It quickly alleviates the pain points in an affordable solution that is available both in the cloud and behind your firewall.



Copyright Info

Eclipse Delivery is Wicked Hard

October, 2013

Genuitec, LLC

2221 Justin Road #119-340

Flower Mound, TX 75028

USA

<http://www.genuitec.com>

Copyright ©2013, Genuitec, LLC. All rights reserved.

This document is provided for informational purposes only and the contents hereof are subject to change without notice. This document is not warranted to be error-free, nor subject to any other warranties or conditions, whether expressed orally or implied in law, including implied warranties and conditions of merchantability or fitness for a particular purpose. We specifically disclaim any liability with respect to this document and no contractual obligations are formed either directly or indirectly by this document.

For More Information on Utilizing Genuitec's Secure Delivery Center to Alleviate the Pain Points of Eclipse Delivery, visit: www.genuitec.com/sdc